

# The Rosemont Ridgewriter

**Newsletter for December, 2011**

## IMPORTANT DATES

### December

- 1-15 - Girls Basketball continues
- 7th - Professional Development Day Students release at 1:45pm
- 7th - Nuance Choir /Zoo Lights
- 8th - Winter Band Concert
- 9th Jazz Band / Zoo Lights
- 10th - Big Horn Brass Concert
- 16th - Holiday Breakfast and Annual Lip Sync
- 19th—1/2/12—Winter Break

### January

- 2nd - No School Staff Development day
- Apple Sale
- 10th— PTO meeting in Library 6:30pm—8:pm
- 11th - Professional Growth Early Release 1:45pm
- 16th— Non Contract Day No School
- 26th — Winter Choir Concert

## Letter from the Principal

Dear Families,

As the holidays approach we are all reminded of the importance of family and friends—the *communities* that we dedicate our love, time, and energy to. These various communities—our families, our neighborhoods, our local community groups, clubs, etc. all help and support us in a number of ways, and we contribute to each of these communities as well. The word community has significant value to each of us as individuals, and also to us as a school, and as a district. The district's mission statement is: *How do we create learning communities of the greatest thinkers and the most thoughtful people...for the world?* The word community is right in the center of that statement. Rosemont Ridge's mission statement is: *Building students of character committed to community and rigorous academic learning.* Once again the word community holds a prominent spot in our statement signaling that it is highly valued by all of us on staff.

Everyone at Rosemont—whether it be a staff member, student or parent— is an important member of the Rosemont Ridge community. We value our parent input, support, questions, and active participation. We have the pleasure of seeing a great number of parents at school on a daily basis helping in classrooms, the workroom, the parking lot, the student store and on various other projects. We also have an incredible PTO organization that coordinates a tremendous number of events and activities for families, students, and staff. We are extremely grateful to our parents for their commitment and contributions designed to build a strong sense of community for all of us here at Rosemont Ridge.

## Letter from the Principal Continued

This strong sense of community is also something our students experience on a daily basis. Students are members of their grade level, their team, their CREW, and their individual classrooms. Some students are also members of the choir, band, orchestra, leadership, yearbook, cross country, volleyball, basketball wrestling and track teams, VOTS, art club or other school communities. Within those communities students learn to contribute, value other's perspectives, express their own views, listen, offer feedback, and share. Communities provide a variety of opportunities for character development and personal growth and our students thrive through these community experiences.

Our staff members also thrive on the experiences they gain as members of various communities here at Rosemont Ridge. Teachers are members of their grade level team, their small team, their content area team, and the staff as an entire learning community. Some teachers also volunteer their time as members of our staff leadership team and work collaboratively on behalf of the whole school community. In these various teams or communities teachers learn, share, collaborate, problem solve, and support their students and each other.

During the month of December we will have several events that are specifically dedicated to honoring, supporting, and celebrating *community*. Our bands and choirs will be performing in various venues, our classrooms will participate in various fund drives for local and national charities, and we will hold our Annual Holiday Breakfast and Annual Lip Sync events. Each of these community activities offer our staff, students and parents an opportunity to engage in meaningful activities that contribute to our school and/or our local community. They provide an opportunity for our students to actively live-out our mission statement—*Building students of character **committed to community** and rigorous academic learning.*

See you next month,  
Debi

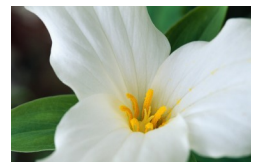
## Letter From the Library



Books make wonderful holiday gifts for readers of all ages, and reading together is also a wonderful way for families to pass cold winter days. The following link provides book lists of classics as well as recent books for children in K through grade 12. Take a look and find some books that will appeal to the children in your life: <http://www.teachersfirst.com/read-sel.cfm>

## Counselor's Blog

Many of you may not have discovered Christina Fowler's blog. We encourage you to access it—you will find many great resources, references and helpful pieces of information there. You can access it by going to our webpage, selecting the staff/homework links page and then selecting Christina Fowler's name. This will take you directly to her blog. She will be adding new ideas/information each month.



# PTO INFORMATION



## Our Next Apple Order Date is coming in January.

Well, the results are in and the people who ordered apples in November LOVED them. We'll be selling apples in January to help you keep those health and wellness resolutions.

We will be sending home order forms with the kids on January 3rd. Orders are due back to school on January 11th— 13th. Kids have a chance to spin a prize wheel for every order form that has over three cases ordered. Every spin is a winner. We have everything from Lollipops to iTunes cards, Movie tickets to ice cream and pizza parties for the winner's.

The Apple Sale is our main fundraiser of the year and we count on it for supplies, scholarships and programming for our kids and teachers. Please encourage your child to take the order form to neighbors, friends and family and to help to support Rosemont Education.

## PTO Meeting and Parent Education Night

Our Next PTO meeting will be on Tuesday, January 10th at 6:30pm in the Library. After a brief PTO meeting to recap events and the budget Debi Briggs-Crispin & Kurt Schultz will be conducting a Parent Education night for Parents of 8th Graders entitled—Is Your Child Ready for High School and Are You Ready to Parent a High Schooler? Join us for another informative evening of discussions. Parents who attend the last Education Night

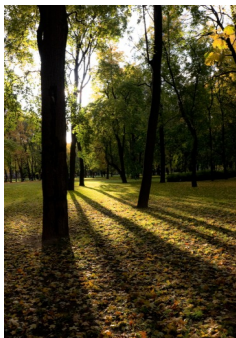
## PTO Gratitude

We wish to extend extra thanks the following people for their help and support;

- Kathy Brandeberry for all of her hard work on the PTO's Jazz Apple Campaign
- Jules and Joe Walters for developing and constantly updating the PTO website (check it out at <http://www.rosemontridgepto.com/>)
- Rebel Steier, Jody Odaniell and Eve Freeman for all of their work on compiling the student directory



## 2011-2012 PTO Executive Board



### President

Jackie Wetzsteon  
President@rosemontridgepto.com

### Treasurer

Jody Odaniell  
Treasurer@rosemontridgepto.com

### Volunteer Coordinator

Cathryn Viteri  
Volunteer@rosemontridgepto.com

### Vice President

Kelly Schneider  
Vicepresident@rosemontridgepto.com

### Secretary

Kathy Brandeberry  
Secretary@rosemontridgepto.com

### Communications

Holly Miller  
Communication@rosemontridgepto.com

## Girls Inc. of NW Oregon works to inspire all girls to be strong, smart and bold.

Girls Inc. is coming to Rosemont Ridge! Girls Inc. Girls Groups offer fun, empowering, proven programming with professionally trained facilitators. This winter, Girls Inc. will offer two groups using the Allies in Action curriculum. Allies in Action teaches girls how to overcome relational aggression—otherwise known as bullying. It focuses on confidence, assertiveness, communication skills and self-esteem. Girls will have fun doing crafts, skits and playing games, while helping them to develop confidence, solve problems and learn to advocate for themselves and others.

**Group 1: For 7<sup>th</sup> and 8<sup>th</sup> grade girls** - Meeting Tuesdays, January 10 - March 6, 4:00-5:10

Registration link: <https://girlsincnworegon.ejoinme.org/rosemontridgew201278>

**Group 2: For 6<sup>th</sup> grade girls** - Meeting Thursdays, January 12 - March 8, 4:00-5:10

Registration link: <http://girlsincnworegon.ejoinme.org/rosemontridgew20126>

Cost is \$125 for winter term. Space is limited to 15 girls per group. Please register at the above link. For questions please contact Jessica at [Jessica@girlsincnworegon.org](mailto:Jessica@girlsincnworegon.org) or 503.230.0054 x5.



Girls Incorporated  
of Northwest Oregon



### Attention Parents of Seventh Graders!

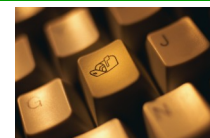
#### Urgent Immunization Reminder

Oregon Law has added an immunization requirement for all students entering the 7<sup>th</sup> grade. Please check your child's records to be sure he/she has the following shot: Tdap Vaccine - 1 dose.

If your child does not have the Tdap shot, please contact your personal doctor or call the Clackamas County Health Department to make an appointment. Once your child has received the Tdap Vaccine please send a written notification to the office at RRMS with the date of the shot given and your signature. Please address this in a timely manner to avoid having your child excluded from school. Exclusion day is February 15<sup>th</sup>, 2012.

### Get Connected

Don't know how to sign up for ListServ messages from the district, find out about those school closures or how to receive E:Mail messages about school events and opportunities or get the school Newsletters? Let us lead the way.



- **ListServ** — To receive important messages from the School and/or the School District sign up for ListServ by going to <http://www2.wlwg.k12.or.us/News/LatestNews/ListservSS/> In addition to those types of messages, the School's weekly *News from the Ridge* and the monthly *Ridgewriter* (the newsletter) both rely on these address submissions. You may add as many schools and e:Mail addresses as you would like.
- **FlashAlert**—is a system that the district uses to notify patrons about inclement weather conditions that impact whether schools will be open. You can subscribe to the FlashAlert system to receive emails and/or text messages when such circumstances arise. To do so, visit the district website ([www.wlwg.k12.or.us](http://www.wlwg.k12.or.us)) and click the link at the top of the left column labeled "Inclement Weather Closure Status". This page will show you the status of schools for the current date and also allow you to subscribe to text/email alerts or to renew your existing subscription.
- **MailChimp** — Pardon the funny name, it's a valuable resource to receive messages from PTO about School Events or volunteering please go to [rosemontridgopto.com](http://rosemontridgopto.com) and click on the Volunteer tab (you don't have to volunteer but you *do* need to give us a little information about you and your child so we can tailor your mail and send you only what you need.)



## NEWS FROM THE OFFICE

**Office Hours: 8 am - 4:15 pm**

**School Hours: 9:15 am - 3:45 pm**

### Late or Absent

Please call the office 503-673-7575 by 9:15 am if your student will be late or out all day. Please call each day your student is out. If you need to leave home before the office is open, please leave a voice message at the this number. It is checked every morning.

### Early Pick-Up

If you need to pick your child up early from school please come to the office to sign him/her out. We will contact the classroom and have your child sent to meet you at the office.

### Medication

We've had an unusual number of students coming to school with medication lately. Please don't send medication (over the counter or otherwise) to school with your student. Parents must bring the medication with the "Instructions for Administration of Medication" forms. Medication sent with a handwritten note will be held in the office until a parent can be reached.



### Dress Code

Shirts should consistently overlap the top of the pants. Halter tops are not appropriate and tank tops should have straps at least 2 fingers wide. Skirts and shorts should be as long as the student's extended arm length. Pants & shorts should be worn high enough so that undergarments do not show. Please remind your child to make wardrobe choices that respect the Dress Code during school hours.

### Parking Lot Incident

As you may be aware, we had an incident where two children were accidentally struck in the parking lot. They were not hurt but they *were* scared. Please use this unfortunate event as a call for caution. Please drive with caution, use appropriate pick up and drop off spots and refrain from picking up your child wherever you see them. Please do not cut through parking spots but instead use the designated lanes. We do recognize that these procedures are not always the most convenient but they are in place for your child's safety. This is a great time to teach your kids about the importance of following the rules even when it doesn't always seem fast or easy. Please also remind your students who walk or ride the bus to do so with safety in mind: use crosswalks, look both ways before crossing, wait away from the road at the bus stop, and don't assume cars on the road or in the parking lot see you walking. Thanks for helping us keep everyone happy and safe.



**Want to help us keep the kids safe?** We could still use a couple of traffic volunteers for 30 minutes in the mornings. Please contact Kurt Schultz if you can help even one morning a week.

### Find Us On Facebook

PTO posts news and upcoming events regularly. Photos of your children, or references therein, will not be included on this page. This is strictly a News Update page.

"Like us" at Rosemont Ridge PTO.





### SCRIP Card News

**Do you have a holiday budget? Keep on top of it with SCRIP!**



You can support Rosemont Ridge Middle School  
by using SCRIP gift cards to purchase all your holiday gifts and groceries!  
SCRIP form doesn't have what you're looking for??

Buy Fred Meyer or Safeway SCRIP and use your gift cards to buy other gift cards. Simple as that!

We will be placing the next SCRIP card order on Monday December 12<sup>th</sup>

Here's how to order:

- Head to... <http://www.rosemontridgepto.com/fundraising/scrip-card-sales> to download and print your order form
- Fill out order form - Don't forget to write your child's crew teacher and your delivery preference on the top right of the form!
- Submit completed form and check made out to RRMS PTO to the front office by noon on December 12<sup>th</sup>
- Your cards will be available on Friday December 16<sup>th</sup>

**Remember...You pay face value for gift cards and RRMS gets 2% - 43% of your purchase**



Questions? Contact [stephaniehascall@gmail.com](mailto:stephaniehascall@gmail.com)



#### What is eScrip?

Different from Scrip—eScrip has created a system that rewards customer loyalty by contributing a percentage of purchases made by participating families to school or youth based groups. Parents, teachers, friends and families are encouraged to register their grocery club cards, and existing credit/debit cards as supporters. A percentage of all purchases made at eScrip merchants will be given back to Rosemont Ridge Middle School.



#### How Does eScrip Work?

Participating merchants contribute each time your families make a purchase using their registered cards. There are no receipts to collect, no vouchers or certificates to buy, no hassles for you and every purchase counts.

Renew your Safeway Club Card with eScrip! Check out our link on the PTO Page under the Fundraising tab. Help us take advantage of free fundraising.

**Questions about Scrip or eScrip? Contact [stephaniehascall@gmail.com](mailto:stephaniehascall@gmail.com)**

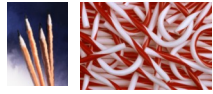
#### **Box Tops For Education. Box Tops =Money for Rosemont.Keep collecting Box Tops for Rosemont!**

Every Box Top counts! Collecting Box tops helps Rosemont Ridge earn cash that we can use to support our students and their programs. Our Goal this year is \$500.00 for the 2011/2012 school year!



There are other ways to earn Box Top points by registering on the web site and clicking on bonus Box Tops. Parents and teachers can shop from the Box Top web site and earn points for our school.

Collections will be done monthly. The CREW class with the most collected by December 9<sup>th</sup>, 2011 will earn an ice cream party and honorable mention! Head to [www.boxtops4education.com](http://www.boxtops4education.com) and sign up today.






## Snack Shack



The Snack Shack is open on the last day of every school week and on the Early Release Wednesday's after school. We offer a popular assortment of candy, snacks, and drinks at reasonable prices! It's a popular location to hang out, grab a quick treat, and see your friends before heading home for the evening!

The Student Store is also open every other Tuesday during lunch with non-food items such as pencils, pens, spiral notebooks, pencil sharpeners, index cards, and coyote wear. Make sure to bring your money before lunch starts to pick up your school supply needs.

| <u>25 ¢ &amp; 50 ¢ Items</u>   | <u>\$1.00 Items</u>        | <u>School Supplies 25¢ - \$2</u>  | <u>Coyote Wear</u>   |
|--|----------------------------|---|--|
| Pop Rocks  | Zots                       | Pencils   | <b>*HOLIDAY PRICING*</b>   |
| Air Heads  | Skittles                   | Pens  |  |
| Otter Pops (2 for 50¢)   | Kit Kat                    | Spiral Notebooks  | Shirts \$5   |
| Gummi Pizza  | Reese's Peanut Butter Cups | Index Cards   | Sweatshirts \$10   |
| Lollipops — 25¢  | Starburst                  | Pencil Sharpeners   |  |
|  | Potato Chips               |  |  |
|  | Cookies                    |   |  |
|  | Red Ropes                  |   |  |
|  | Pepperoni Sticks           |   |  |
|  | Soda, Gatorade & Water     |   |  |

### Spirit Wear is on sale this month!



Consider picking up some Spirit Wear for Holiday Gifts! We will have a table at the Holiday Breakfast / Lip Sync. Purchases can also be made whenever the Snack Shack is open. Makes a quick and easy gift!

### Grab Bags for sale at just 50¢ and \$1.



Every grab bag purchased in the month of December includes a raffle ticket good for a drawing on after Winter Break on January 6th.

Grab Bag Raffle Prizes Include:  
Electronic Sudoku Game!  
Coyote Gear & T-Shirts!  
Snack Shack Snacks!

**All profit goes directly towards scholarships for Rosemont students.**

We will happily accept any wrapped donations of the above items so that we may add to the School Scholarship Fund. There is a Donation box located in the front office. We could always use; Pepsi products (especially Wild Cherry, Regular and Dr. Pepper), Sprite, RED/BLUE Gatorade, Kit Kats, PB Cups, Starburst, Skittles, M&M's, and plain Hershey's Chocolate Bars. Please feel free to contact our fabulous Snack Shack Coordinator April Krubel at aprilkrubel@gmail.com if you have any questions Thanks!

### Newsletter Due Dates

Rosemont's monthly newsletter, *The Rosemont Ridge writer*, will be published near the first of the month. All information for the following month's newsletter must be submitted by the 3rd Wednesday of the previous month. Please send items for inclusion to Holly Miller at [Communication@rosemontridgepto.com](mailto:Communication@rosemontridgepto.com). Whenever possible please submit articles of interest in Word documents. The deadline for the January issue is 12/21/11.

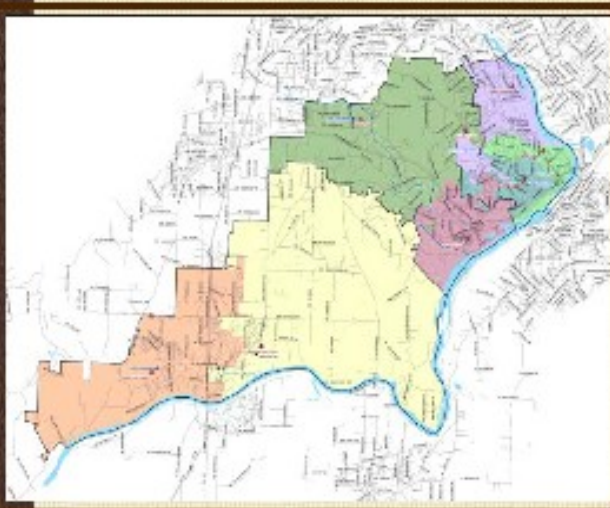




## WEST LINN-WILSONVILLE SCHOOL DISTRICT

*How do we create learning communities of the greatest thinkers  
and the most thoughtful people...for the world?*

### Attendance Area/Boundary Community Meetings



**Monday, December 12**

**Time: 6:30 p.m.**

**Place: Rosemont Ridge Middle School – Commons**

**Wednesday, December 14**

**Time: 6:30 p.m.**

**Place: Wilsonville High School**

**\*\*\*Childcare Provided\*\*\***

The school district is inviting the community to come together for two meetings in December for the opportunity of thoughtful planning, communication, and to the excitement and possibility that the opening of Lowrie and Trillium Creek Primary Schools brings to our communities.

These meetings are designed to gather input and generate questions from our communities and families related to attendance area/boundary adjustments associated with the opening of these new primary schools.

The West Linn-Wilsonville Boundary Task Force will use information gathered at these meetings to guide their preparation of recommendations to present to the School Board in March/April.

The district will also hold an additional round of community meetings in late January or early February, locations and times TBA.



**West Linn-Wilsonville School District**

Ph 503.673.7000 | Fx 503.673.7001

22210 SW Stafford Rd | Tualatin, OR 97062

[www.wlww.k12.or.us](http://www.wlww.k12.or.us)